

## True Technology Integration

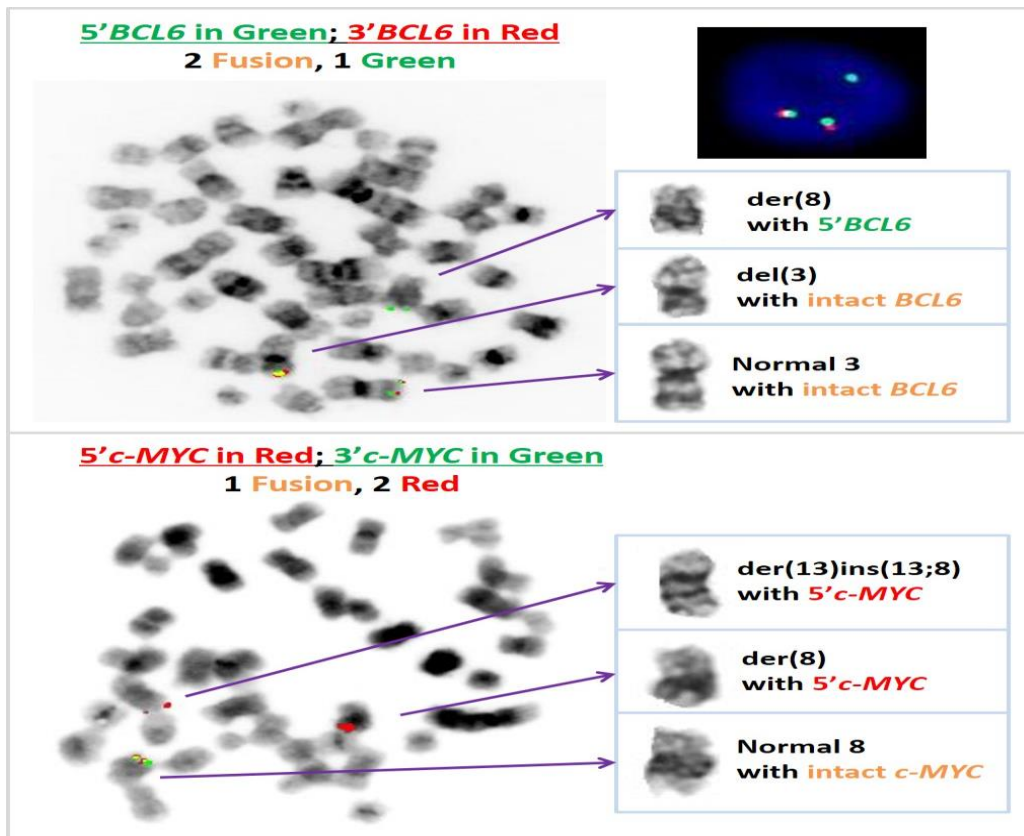
### Case Study: Newly Diagnosed CD10 Positive Large B-Cell Lymphoma

Double Hit Lymphoma FISH panel and Cytogenetics testing requested on a Cervical Lymph Node.

INITIAL RESULTS	
BCL2 Rearrangement	----->Positive
BCL6 Rearrangement	----->Unclear
c-MYC Rearrangement	----->Unclear

Initial results using conventional testing revealed partial deletions of c-MYC and BCL6, suggestive but not definitive for rearrangements. HematoLogics is one of the only reference laboratories offering *Metaphase FISH*. Technology integration of cytogenetic banding with fluorescence in situ hybridization, specifically targeting questioned chromosomes allowed confirmation of true rearrangements. Accurate *'Triple Hit'* finding was provided with high confidence to Pathologist and treating Physician.

### INTEGRATED RESULTS



INTEGRATED RESULTS- <i>"TRIPLE HIT LYMPHOMA"</i>	
BCL2 Rearrangement	----->Positive
BCL6 Rearrangement	----->Positive
c-MYC Rearrangement	----->Positive

Communication between silos produced integrated complete results

**Best for Your Patient - Best for You**

