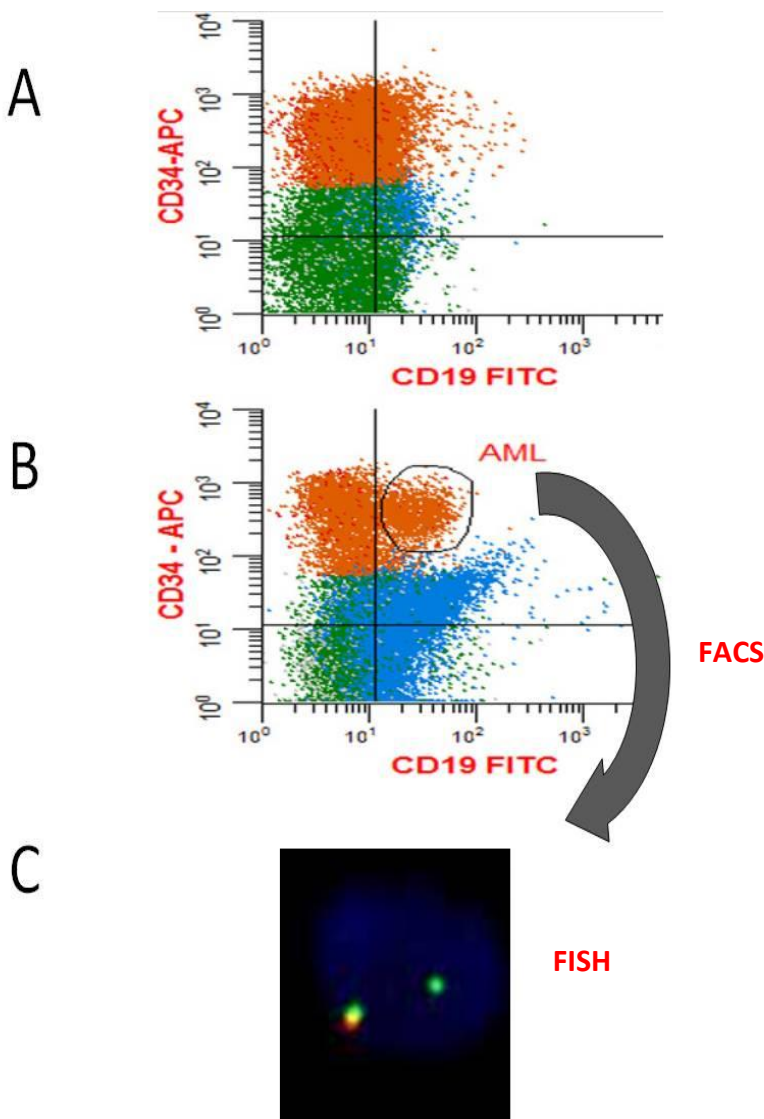


## Fluorescent Activated Cell Sorting (FACS) Combined with FISH (**FACS – FISH**) Improves Specificity, Sensitivity and Diagnostic Confidence in AML Testing

FACS-FISH in AML Improves Diagnostic **Confidence** and **Sensitivity**



Diagnostic immunophenotype shows AML with t(11;19)

$\Delta N$ :™ (Difference from Normal) Myeloid Flow Cytometry identifies a 0.5% MRD Post-treatment which the Leukemia Associated Immunophenotype (**LAIP**) method can miss.

MLL/KM2TA/11q23 BAP FISH  
OR1G1F MLL rearrangement with 3' deletion

## FACS-FISH in AML Improves MRD Testing **Specificity** and Correlates $\Delta N$ :™ (Difference from Normal) Flow Cytometry to Molecular Findings

- Diagnostic sample shows AML with t(8;11): core binding factor in AML {aka Inv(16)}
- Post treatment for MRD shows no evidence of AML with t(8;11) by  $\Delta N$ :™ flow cytometry but positive for RUNX1/RUNX1T1
- CD34 cells were sorted by FACS
- **RUNX1/RUNX1T1 RQ-PCR positive on MAST cells, not CD34 cells**

