

Hematologies Update Vol.4

3161 Elliott Avenue, Suite 200, Seattle, WA 98121 Phone (800) 860-0934 Fax: (206) 223-5550 www.hematologies.com

True Technology Integration

Hematologies routinely implements truly integrated, innovative laboratory techniques that provide an accurate diagnosis, giving greater confidence in making treatment decisions for your patients. The case study below provides an example of true technology integration to determine an accurate result in a difficult case.

Case Study

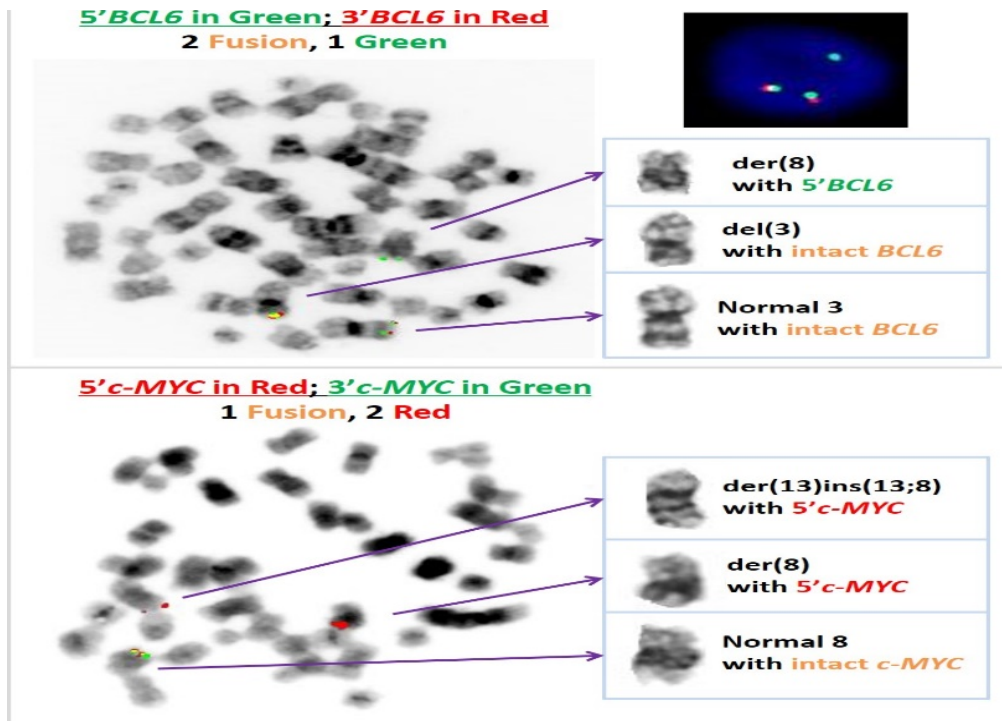
A cervical lymph node biopsy positive for **CD10+ Large B-Cell Lymphoma** was sent for **FISH** and **Cytogenetic** testing to determine if the lymphoma was to be classified as a **High-Grade B-Cell Lymphoma with MYC and BCL2 and/or BCL6 rearrangements (AKA double/triple hit lymphoma)**.

INITIAL RESULTS

BCL2 Rearrangement ----->	Positive
BCL6 Rearrangement ----->	Unclear
c-MYC Rearrangement ----->	Unclear

Initial results using conventional testing revealed partial deletions of c-MYC and BCL6, suggestive but not definitive for rearrangements. Hematologies is one of the only reference laboratories offering **metaphase FISH**. Technology integration of cytogenetic banding with fluorescence in situ hybridization, specifically targeting questioned chromosomes allowed confirmation of true rearrangements. Accurate 'Triple Hit' finding was provided with high confidence to Pathologist and treating Physician.

INTEGRATED RESULTS



INTEGRATED RESULTS- "TRIPLE HIT LYMPHOMA"

BCL2 Rearrangement ----->	Positive
BCL6 Rearrangement ----->	Positive
c-MYC Rearrangement ----->	Positive

Communication between silos produced integrated results achieving the correct results.

Hematologies provides a unique approach to testing in the areas of **Difference from Normal (ΔN) Flow Cytometry, Molecular Genetics, Cytogenetics, Deep Sequencing, FISH and Micro-Array**. Please visit our website, www.hematologies.com, for more information or call us at (800) 860-0934.

Best for Your Patient-Best for You